

Diverging Diamond Interchange

TRANSPORTATION

SUMMIT

2017

Rick McGuckin, PE, CPESC
DGL Consulting Engineers, LLC
Director of Transportation

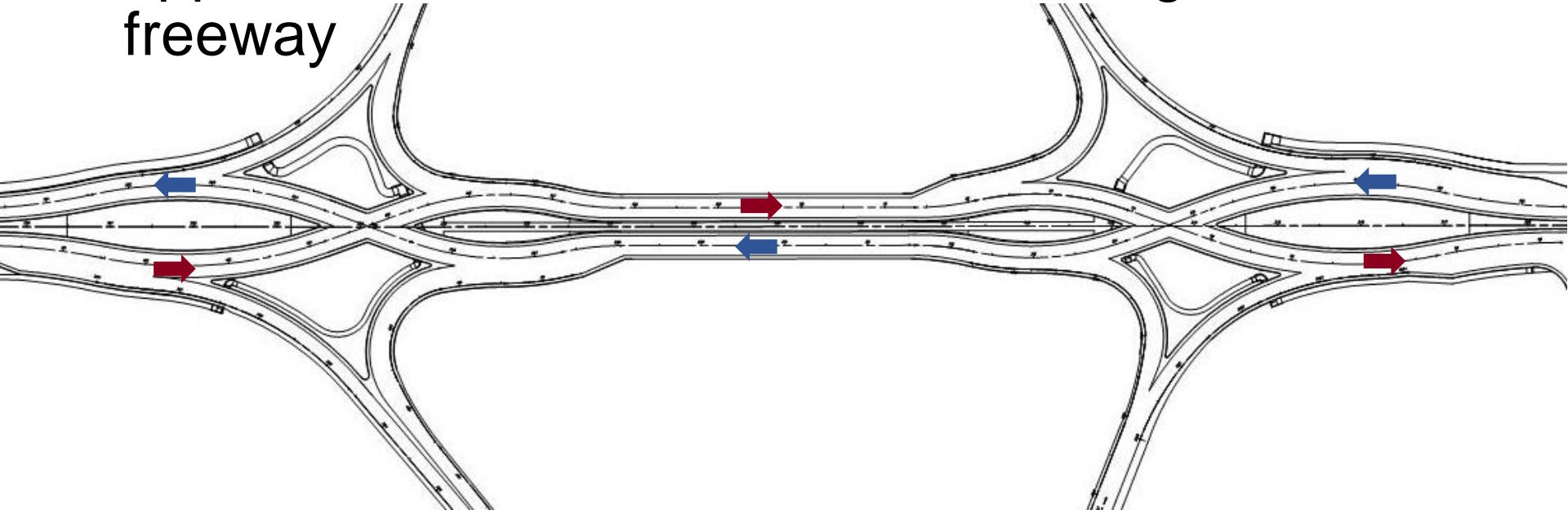


Agenda

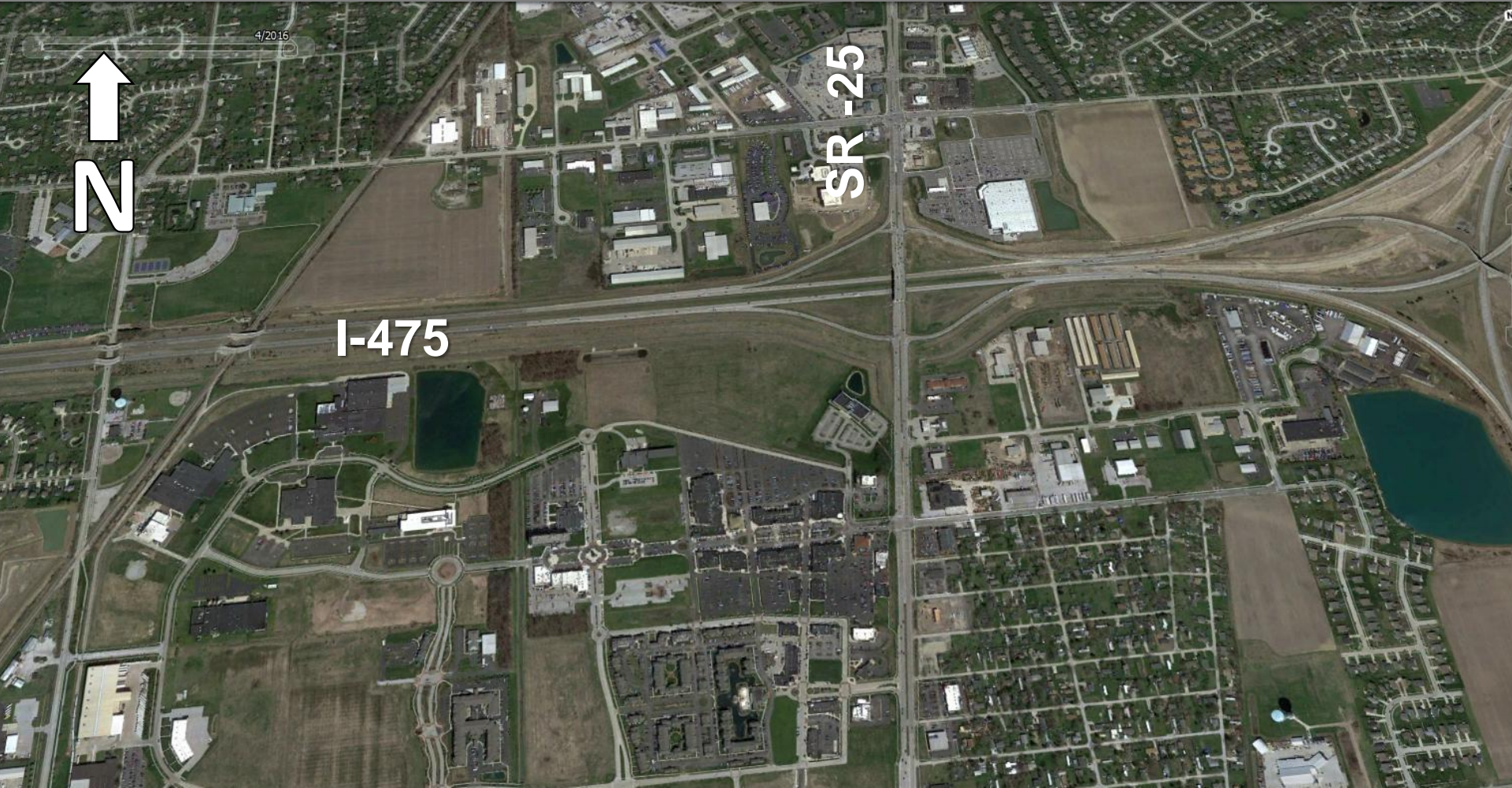
- Diverging Diamond Interchange (DDI)
- Existing Conditions
- DDI Video
- Benefits and Additional Features
- Schedule
- Informing

DDI definition

Diverging Diamond Interchange: type of diamond interchange in which two directions of traffic on the non-freeway road cross to the opposite side on both sides of the bridge at the freeway



Existing Conditions



Structure (77.5' f/f parapet)



Traffic

- Traffic backups onto mainline IR-475
- Traffic queues observed to back out of turn lanes
- Crashes ~ 60 per year (expected 42)

The cover page features the logos of the State of Ohio Department of Transportation and the 'Every Day Counts' program. The year '2013' is prominently displayed in the top right. The title and study details are centered in a green box. Below the title is a map showing the study area with a green star at the intersection of Dixie Highway and other roads. An aerial photograph of a highway interchange is shown at the bottom left. The bottom right corner contains the text: 'Planning & Engineering Department ODOT District 2 4/30/2013'.

STATE OF OHIO
DEPARTMENT OF TRANSPORTATION

Every Day Counts
Innovation Acceleration Investment

2013

District 2 Planning & Engineering
Safety Study - W00-25-20.71-21.01 (Dixie Highway)
Wood County
#9 - TMACOG 2035 Long Range Plan, #2 Jacobs IR-475 Study

Planning & Engineering
Department
ODOT District 2
4/30/2013

Interchange Options

- ODOT District 2 looking into interchange modification options
- Early planning level research - contacted Gilbert Chlewicki, PE (DDI)

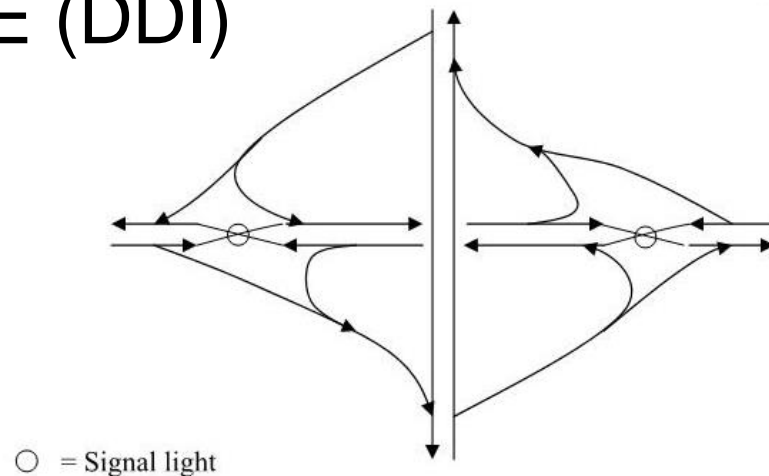


Figure 3. Diverging Diamond Interchange.

2nd Urban Street Symposium (Anaheim, California) — July 28-30, 2003

Video



DDI - Summary of Benefits

Safety

- Fewer conflict points
- Wrong way entry difficult

Operational

- Two – phase efficiency, free flowing lefts
- Increased Storage, reduced queue

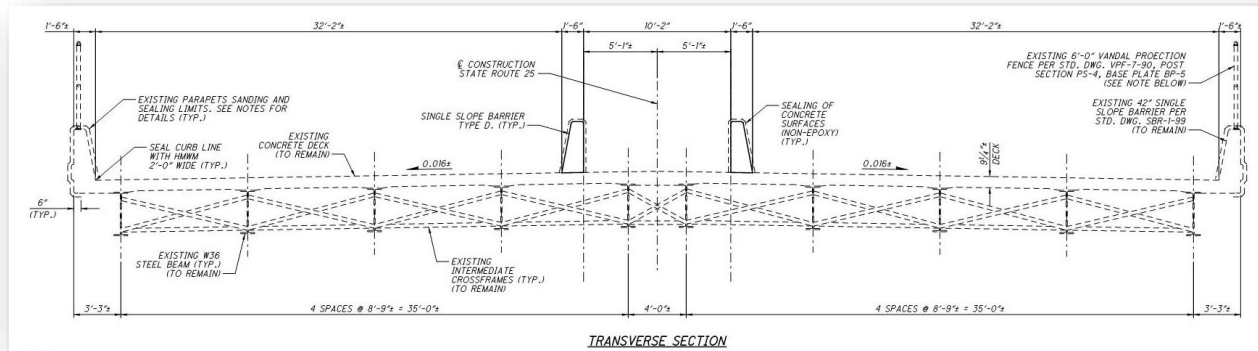
Cost

- Minimal structure work
- Decreased construction time



Additional Features

Pedestrian and Bike Facilities



Additional Features

Landscaping

- Native flowering plants
- Spring flowers, green summer, fall color, winter berries



SR 25 over I-475 Perrysburg



Cost: \$7.99M
Award: 8/18/16
Contractor: ES Wagner

Schedule

Fall 2016

- Embankment / retaining wall / temp. pavement

Spring 2017

- SR25 one lane each direction
- Bridge closure for one weekend
- 4 to 5 week off ramp closures

September 17, 2017 DDI Full Operation

October 15, 2017 Final Completion

Informing

- City of Perrysburg, ODOT, local jurisdictions, law enforcement and fire personnel meet monthly
- Updated information on website and local newspapers
- Open House planned for public and local businesses